

**Acasta**  
C e r a m i c s

**Export Inquiry**

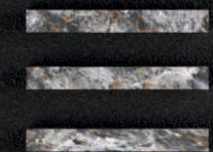
+91 63 55934 199 | [export@acastaceramics.com](mailto:export@acastaceramics.com)

Follow Us:



[www.acastaceramics.com](http://www.acastaceramics.com)

**Acasta**  
C e r a m i c s



**VELVET**  
S U R F A C E

# VELVET SURFACE



/ From ordinary  
to extraordinary

## ABOUT US

**2** Sizes  
**9mm** Thickness  
**15+** Finishes

INDIVIDUAL PLANT  
FOR BOTH SIZE



Velvet Surface is the epitome of refined elegance, offering a smooth, soft sheen that perfectly balances between glossy and matte. This exquisite finish adds a touch of subtle sophistication to any space, enhancing the texture and color of the tiles without overwhelming the overall design with excessive shine. Its sleek appearance makes it an ideal choice for both modern and traditional interiors, providing a versatile and stylish option that complements a wide range of décor styles. Whether you're aiming for a minimalist look or a more ornate setting, VelvoSoft Tile Finish delivers a timeless charm that elevates the aesthetic appeal of any room.

/ Your vision,  
our craftsmanship.

## BUILT FOR BEAUTY AND STRENGTH

**600X  
1200MM** →

Tiles Perfectly Sized For Seamless  
Elegance And Durability

Experience the perfect fusion of elegance and functionality with our 600x1200mm tiles, featuring a cutting-edge Velvet Surface, designed for contemporary interiors. These tiles Provide a refined aesthetic while ensuring unparalleled durability and performance.

The Velvet surface enhances the tactile appeal with its smooth, soft-touch texture, delivering a sophisticated look that is both modern and timeless. This innovative finish not only minimizes glare but also resist fingerprints and Smudges, ensuring the surface stays pristine and easy to maintain.

**Acasta**  
C e r a m i c s

→ | ←  
**9MM**  
Thickness





# VELVET SURFACE

/ Creating impressions  
that stay.

# Acasta

Ceramics

## ENDURING STRENGTH TIMELESS STYLE

Velvet Surface packed with advance features for unmatched performance and aesthetics.



Absorb Off  
Odours



Temperature  
Resistance



Chemical  
Resistance



UV  
Resistance



Freeze  
Resistance



Fire  
Resistance



Highly Compact  
Material



Heating Sun  
Resistance



Hypoallergenic



Various Sizes



Scratch  
Resistance



Pure Hygiene  
Surface

/ A foundation for  
inspired living.

**Acasta**  
C e r a m i c s

## DESIGNING LUXURY DEFINING SPACES

unique structures and luxurious design that redefine the look of your space.

Experience the perfect fusion of elegance and functionality with our 600x1200mm tiles, featuring a cutting-edge Velvet Surface, designed for contemporary interiors. These tiles provide a refined aesthetic while ensuring unparalleled durability and performance.

The Velvet surface enhances the tactile appeal with its smooth, soft-touch texture, delivering a sophisticated look that is both modern and timeless. This innovative finish not only minimizes glare but also resists fingerprints and smudges, ensuring the surface stays pristine and easy to maintain.



# BOLD PATTERNS LUXURIOUS APPEAL

Experience Luxury With Exclusive Designs,  
Rich Textures, And Vibrant Tile Colors.



**VELVET**  
SURFACE

# index

## INTERACTIVE GUIDE



Please Click  
the corresponding tiles  
to view specific tile details.



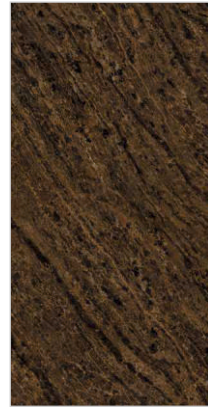
VNT-01 BROWN



VNT-02 OXIDO



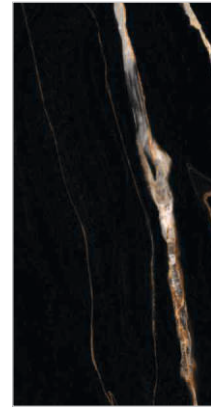
VNT-03 BLACK



VNT-04 GOLD



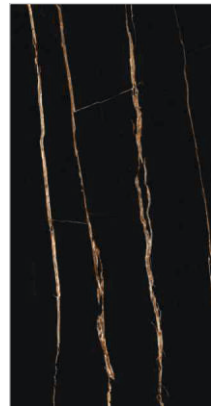
VNT-05 CARBON



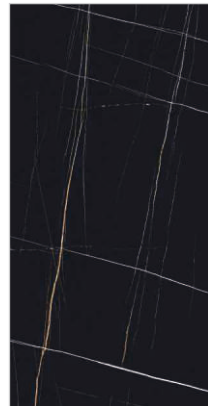
VNT-06 BLACK



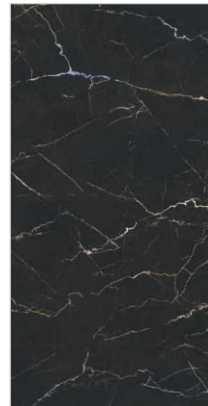
VNT-07 BROWN



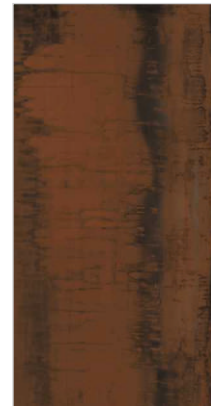
VNT-08 BLACK



VNT-09 BLACK



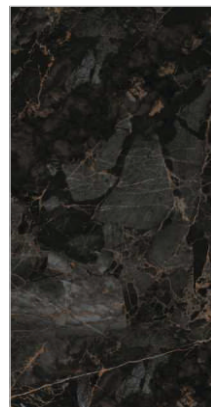
VNT-10 BLACK  
MULTY



VNT-11 BRONZE



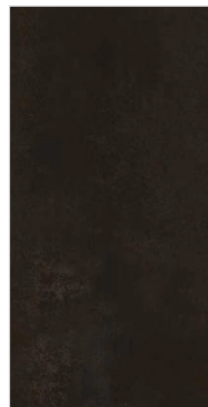
VNT-12 MIX



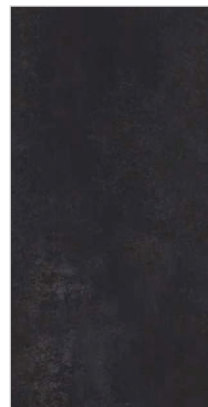
VNT-13 BLACK



VNT-14 BROWN



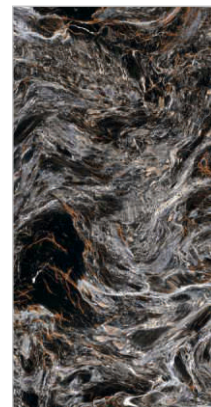
VNT-14 GRIGIO



VNT-14 NERO



VNT-15 BLACK



VNT-16 BLACK



VNT-01 BROWN

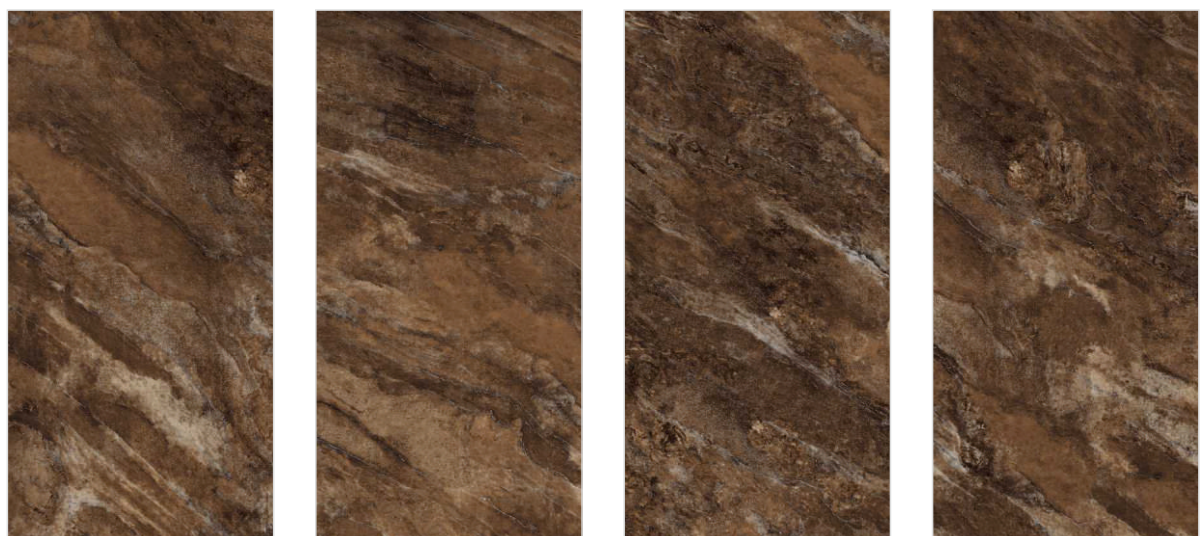
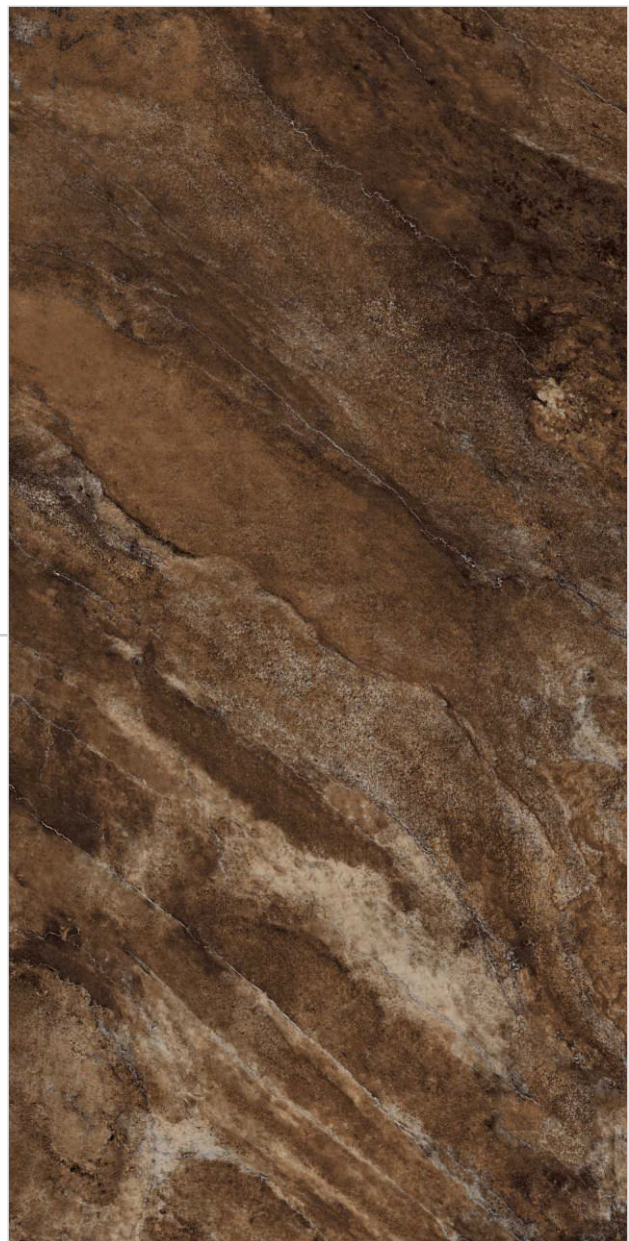
600X1200mm

## VNT-01 BROWN

 Finish

 **9MM**  
Thickness

Random **04**





VNT-02 OXIDO

600X1200mm

**VNT-02 OXIDO**



**9MM**  
Thickness

Random **04**

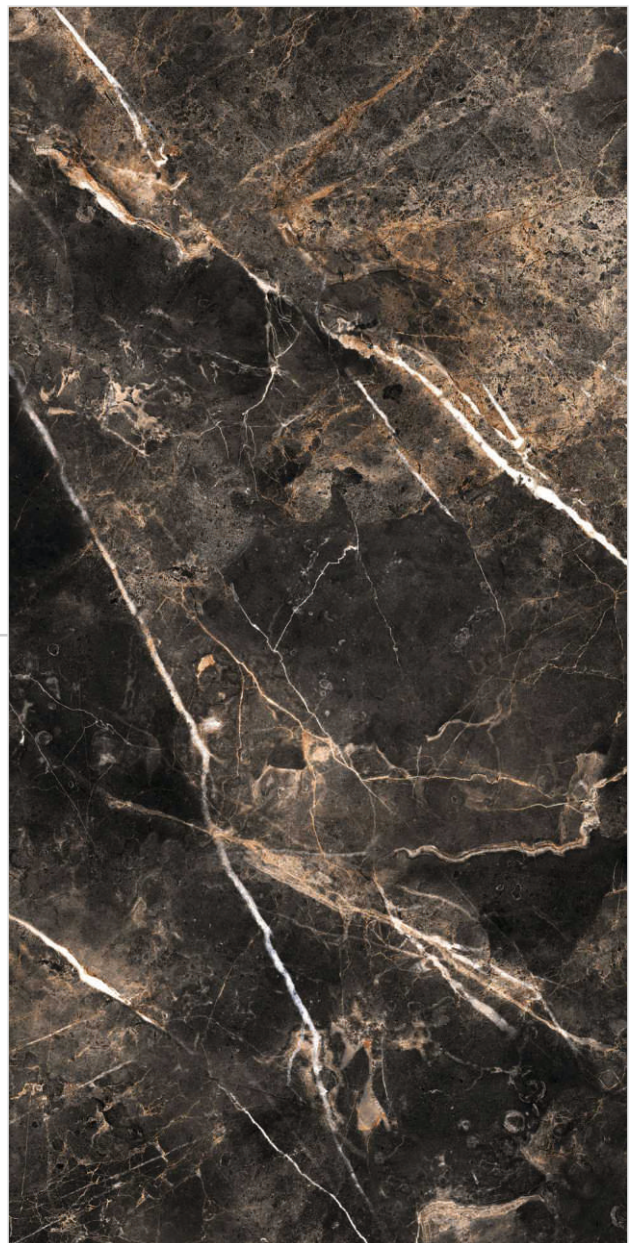


600X1200mm  
**VNT-03 BLACK**



**9MM**  
Thickness

Random **06**





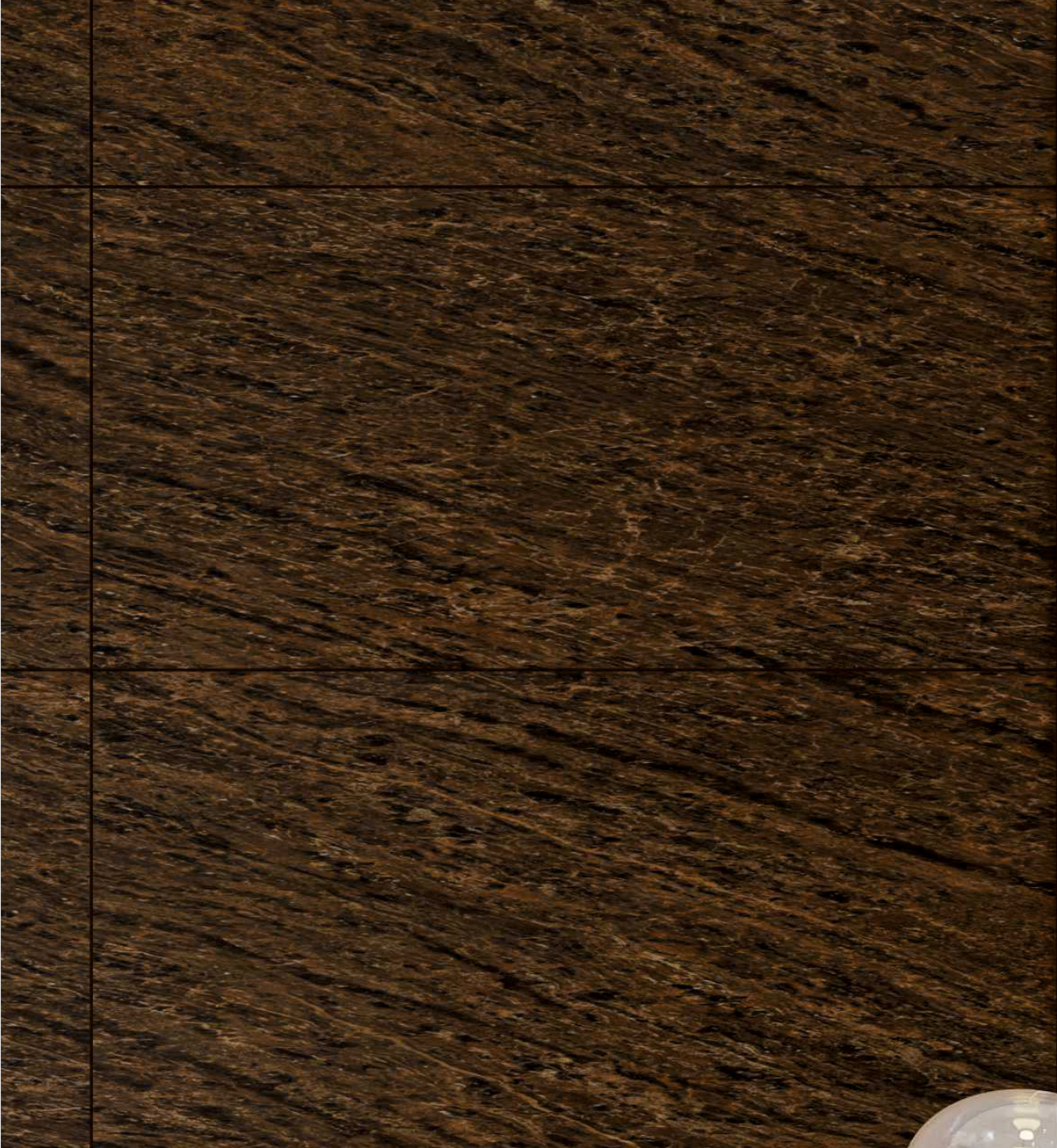
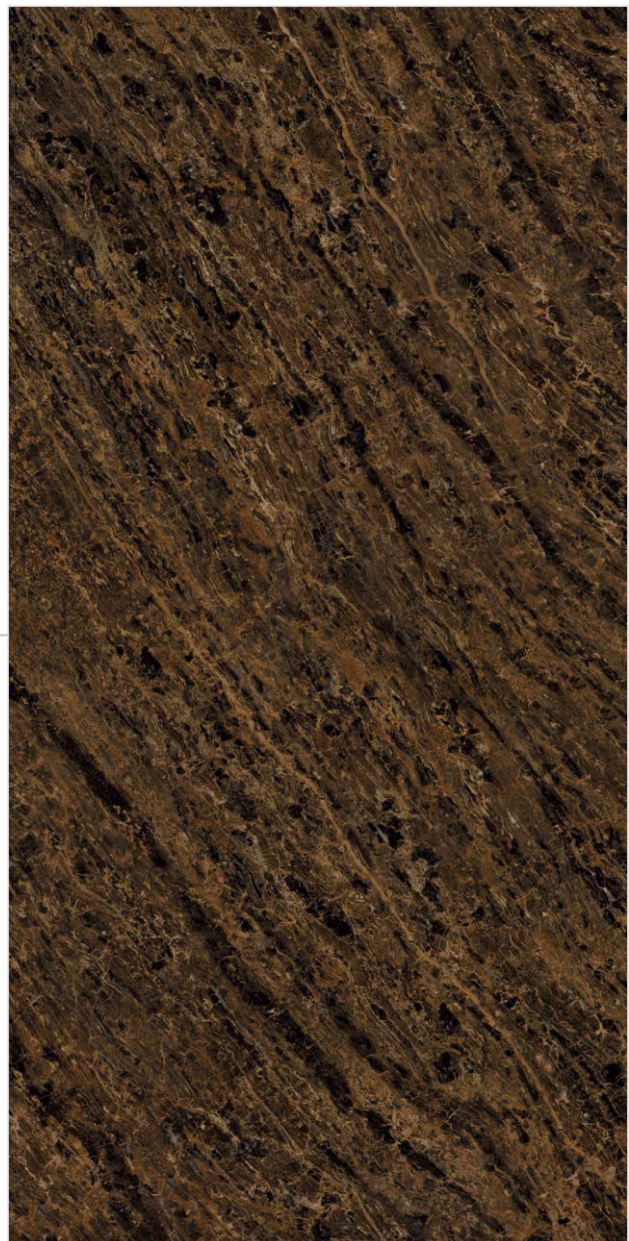
VNT-03 BLACK

600X1200mm  
**VNT-04 GOLD**



**9MM**  
Thickness

Random **03**





VNT-04 GOLD

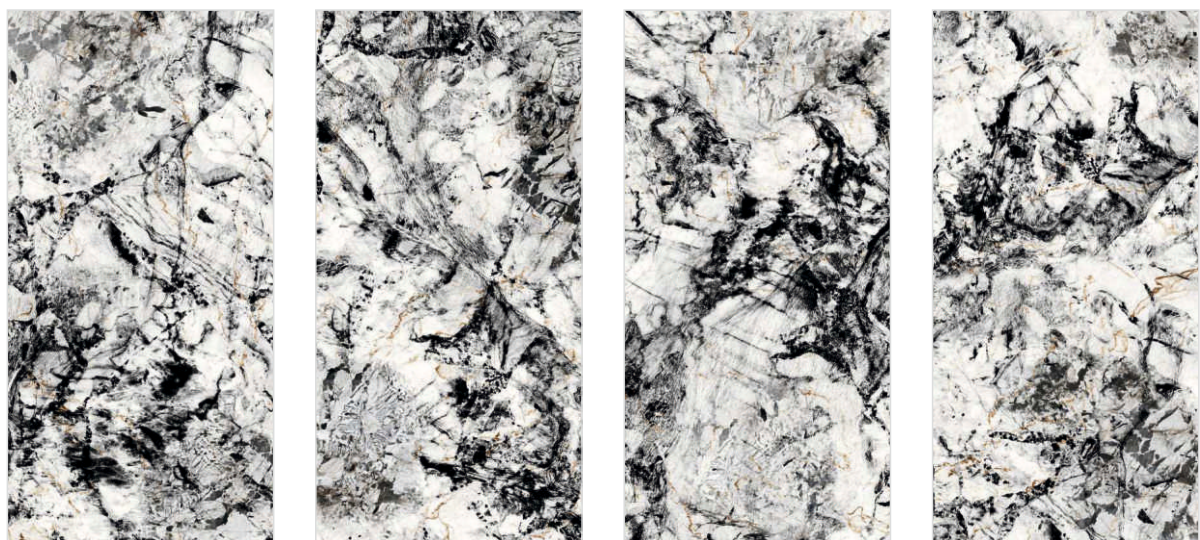
600X1200mm

## VNT-05 CARBON



**9MM**  
Thickness

Random **04**





VNT-05 CARBON

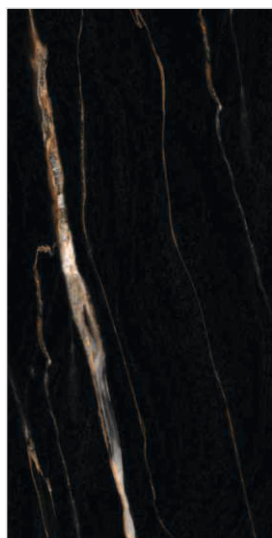
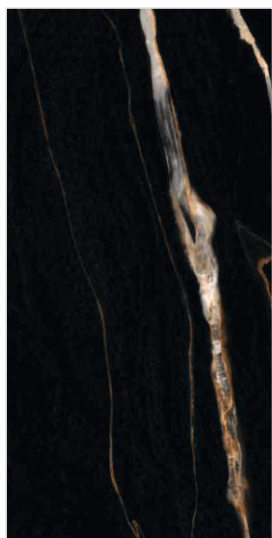
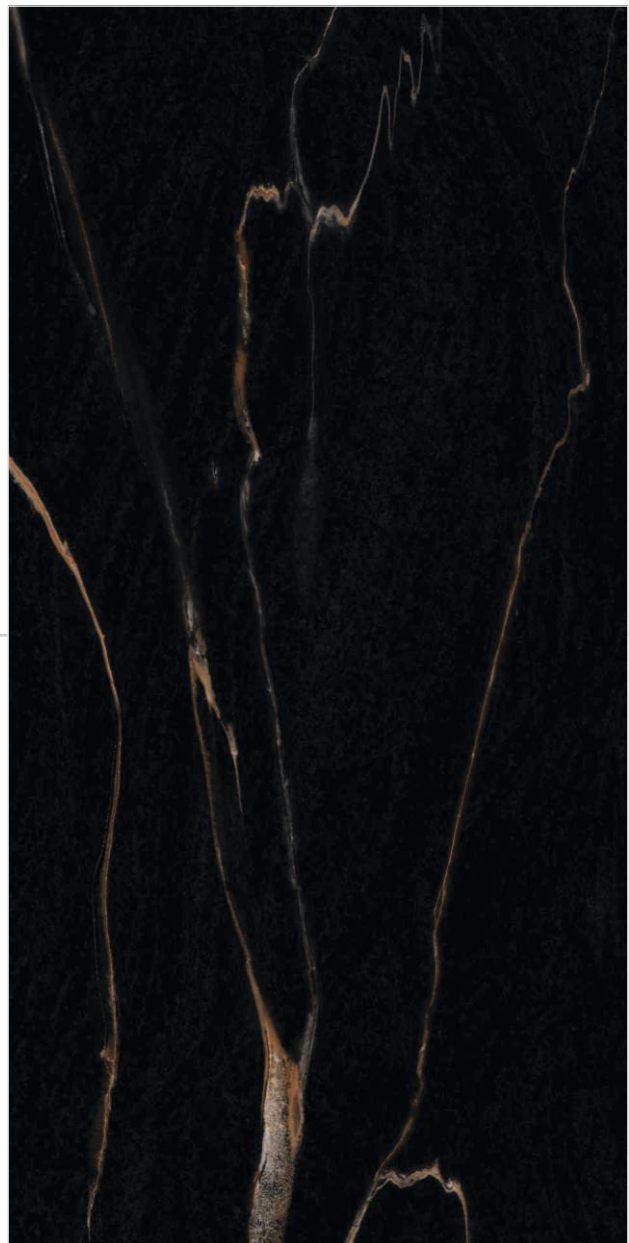
600X1200mm

## VNT-06 BLACK



**9MM**  
Thickness

Random **04**





VNT-06 BLACK

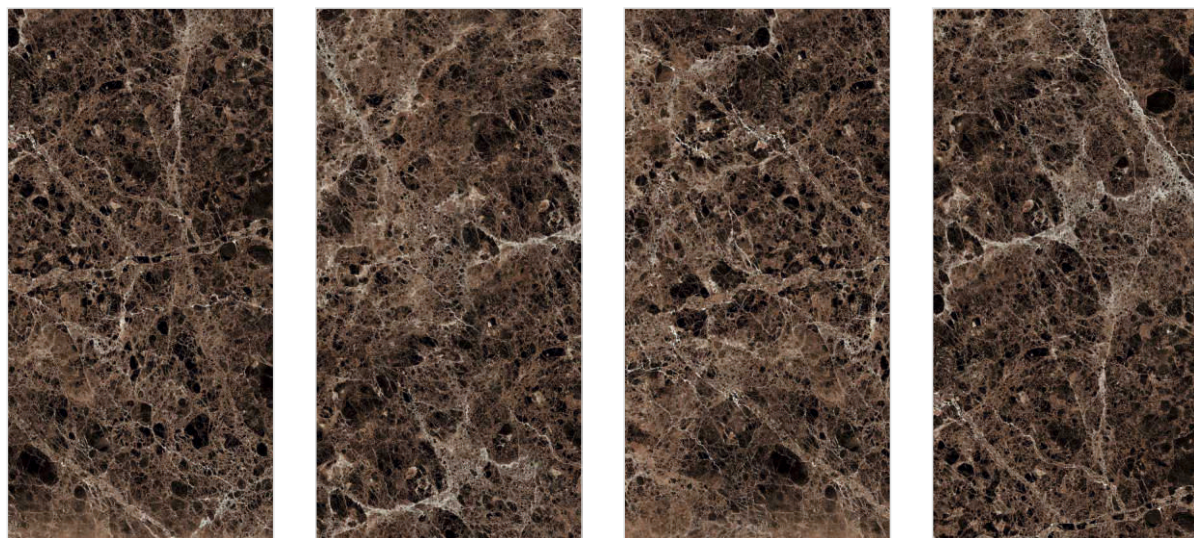
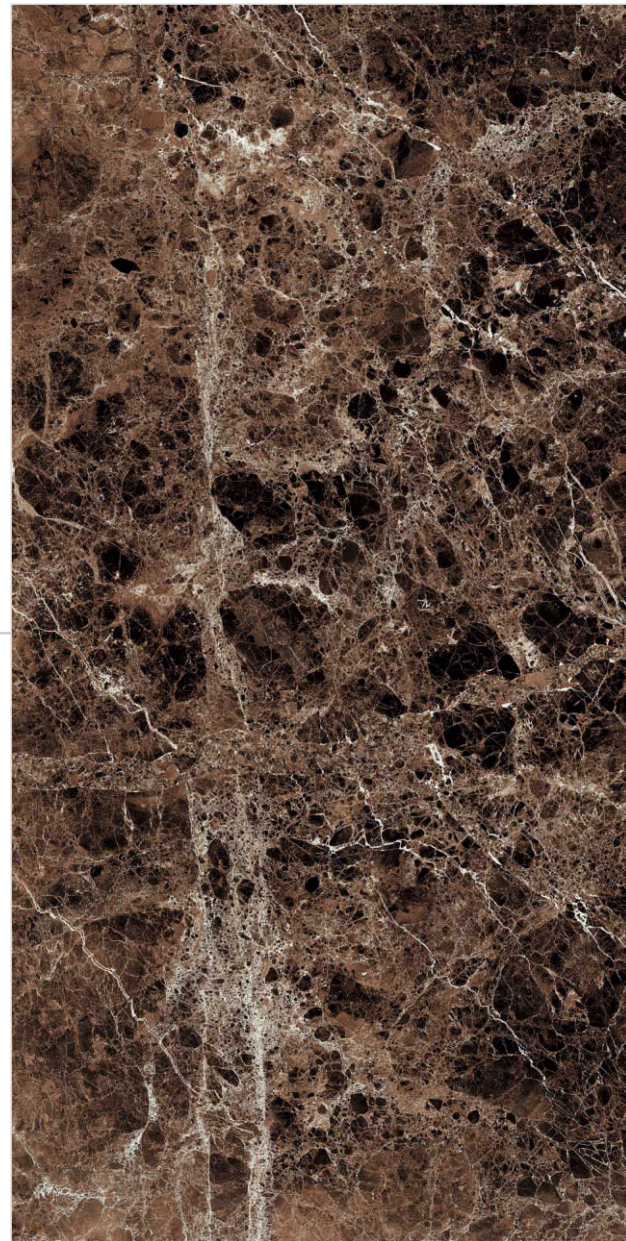
600X1200mm

**VNT-07 BROWN**



**9MM**  
Thickness

Random **06**





VNT-07 BROWN

600X1200mm

**VNT-08 BLACK**



**9MM**  
Thickness

Random **04**





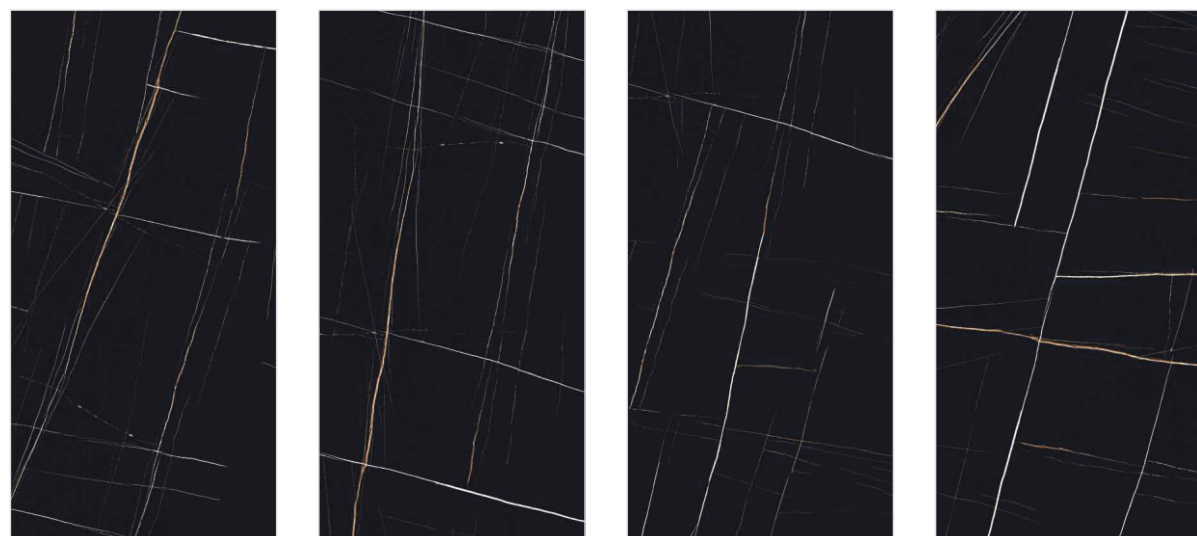
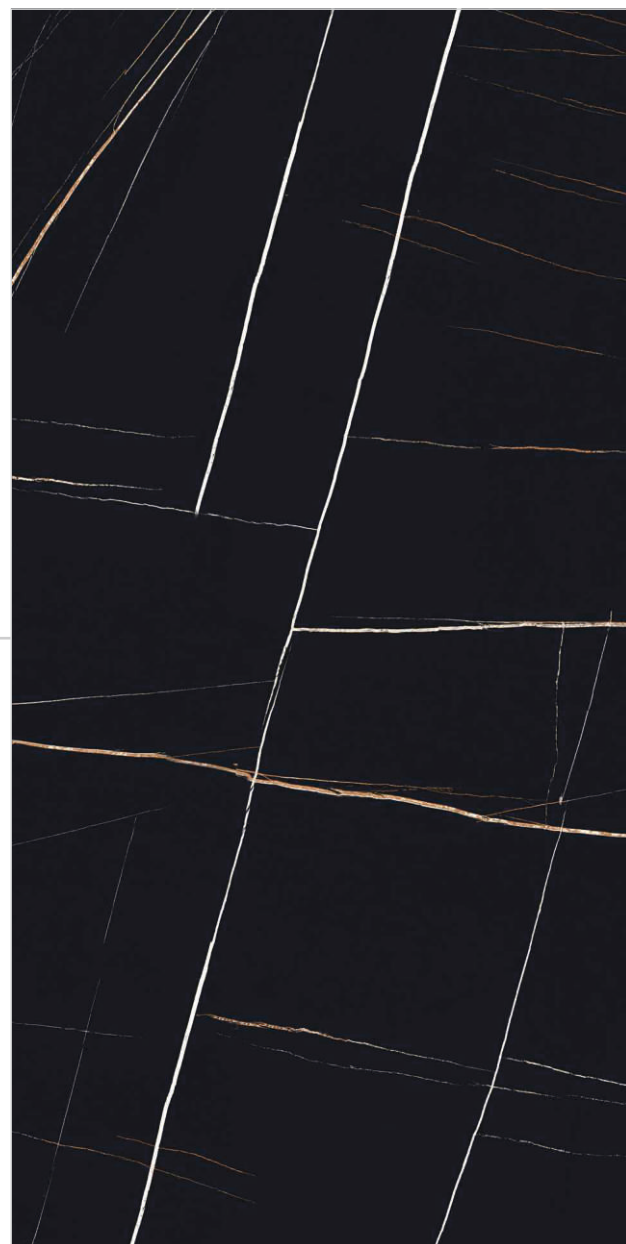
VNT-08 BLACK

600X1200mm  
**VNT-09 BLACK**



**9MM**  
Thickness

Random **04**





VNT-09 BLACK

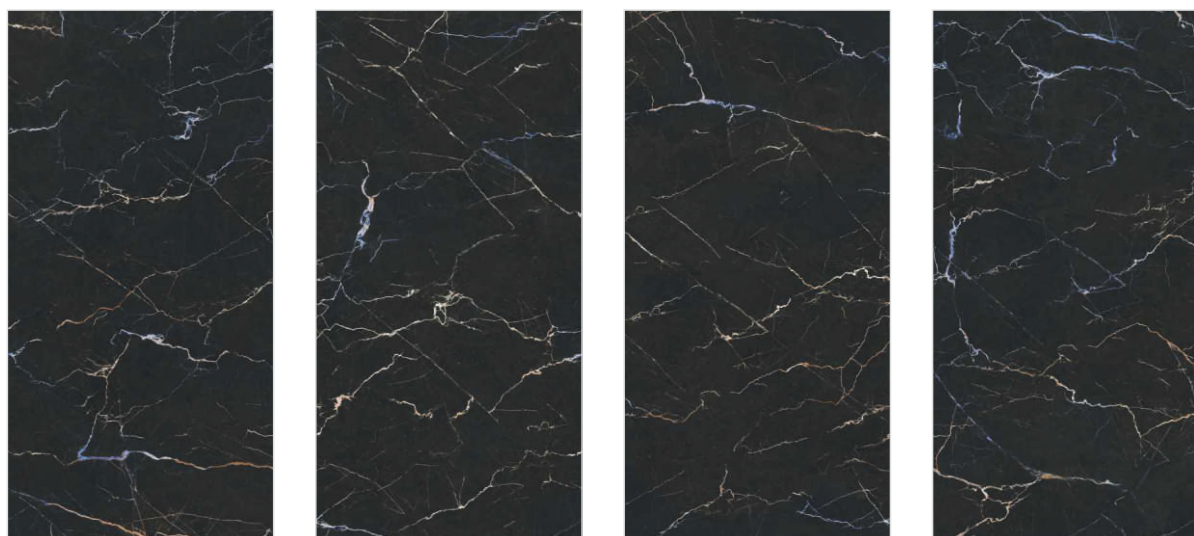
600X1200mm

## VNT-10 BLACK MULTY



**9MM**  
Thickness

Random **04**



INDEX



VNT-10 BLACK MULTY

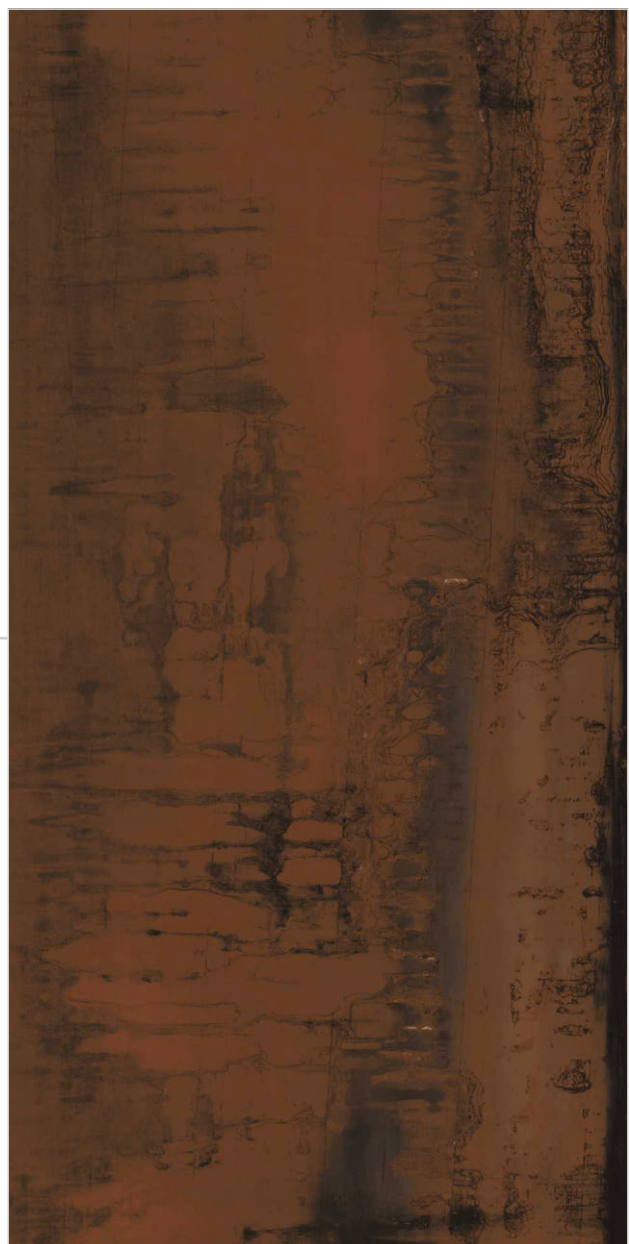
600X1200mm

## VNT-11 BRONZE



**9MM**  
Thickness

Random **04**



VNT-11 BRONZE

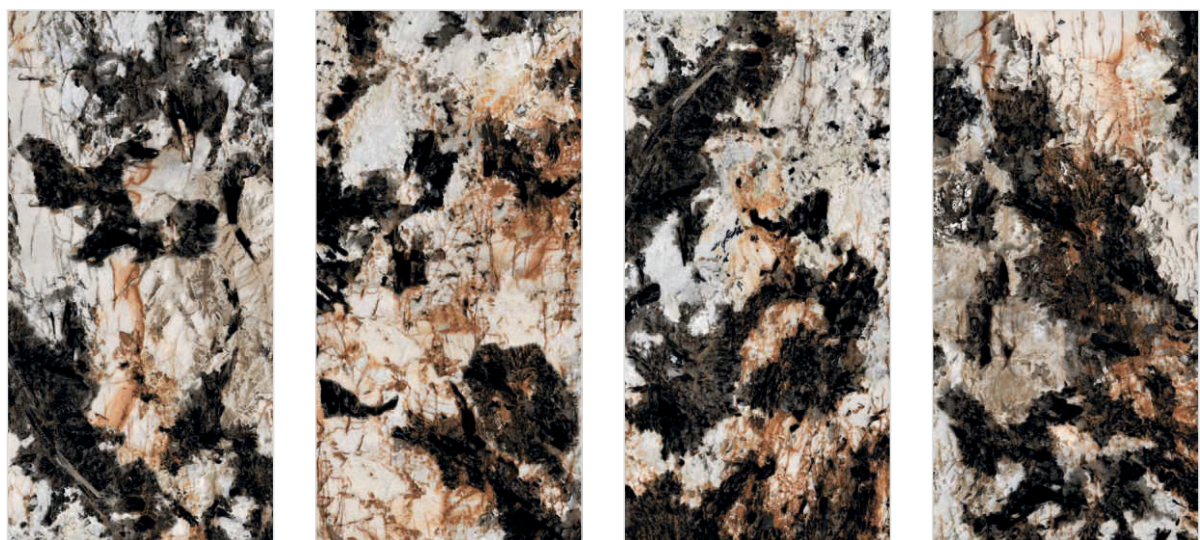
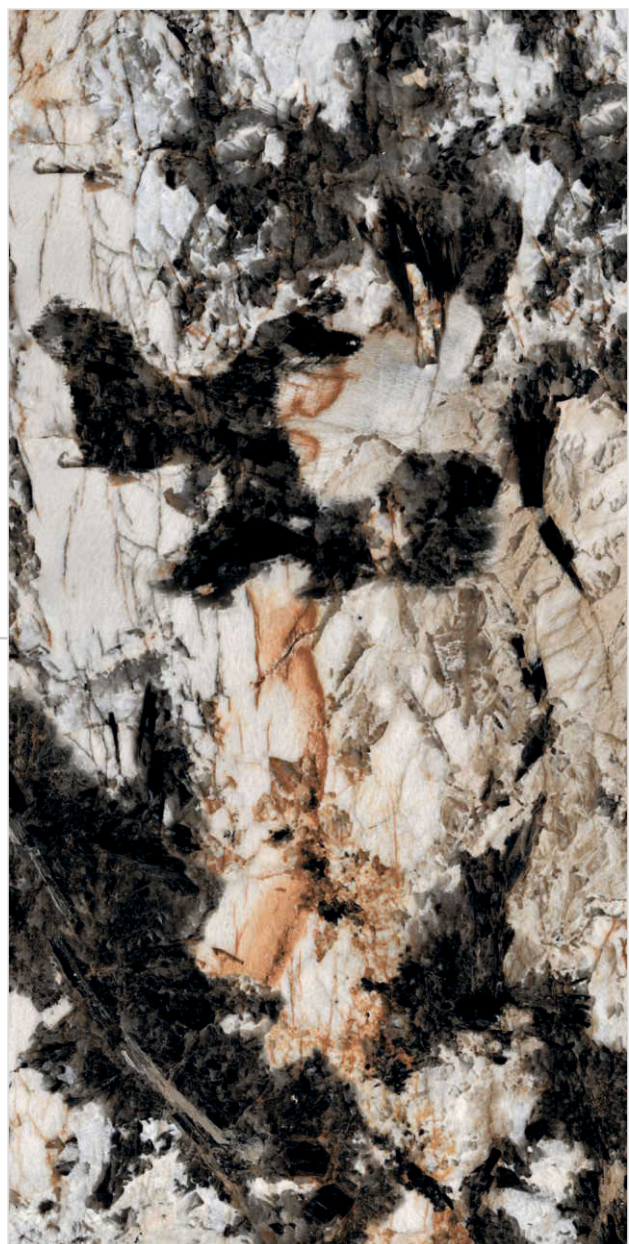


600X1200mm  
**VNT-12 MIX**



**9MM**  
Thickness

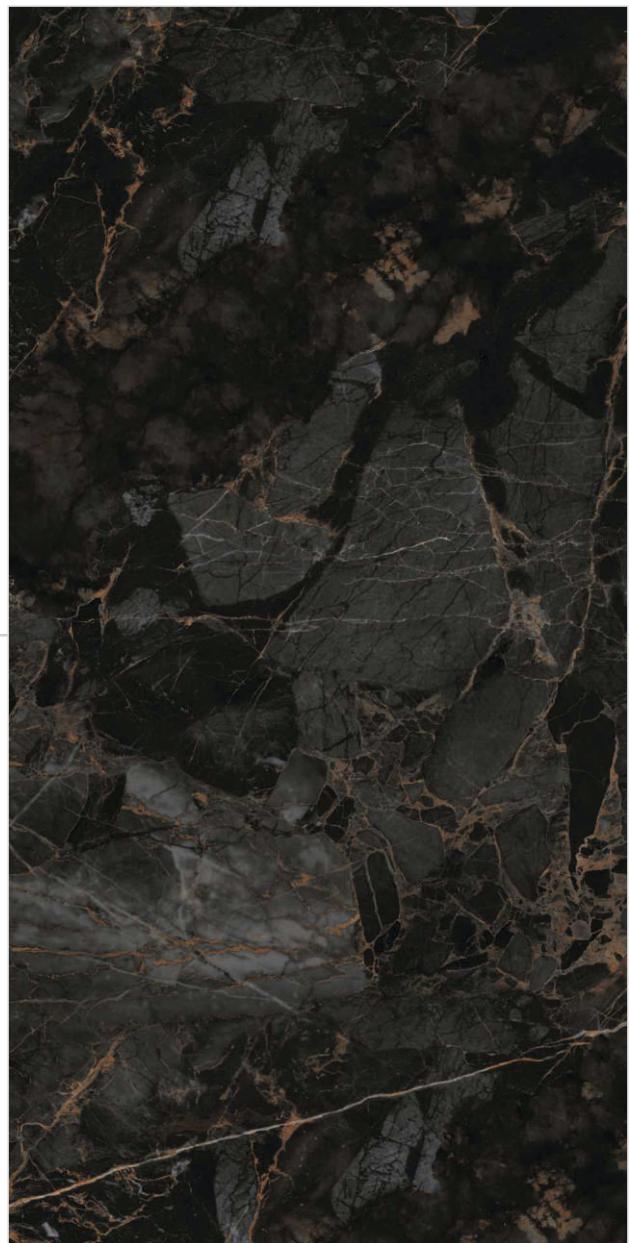
Random **04**





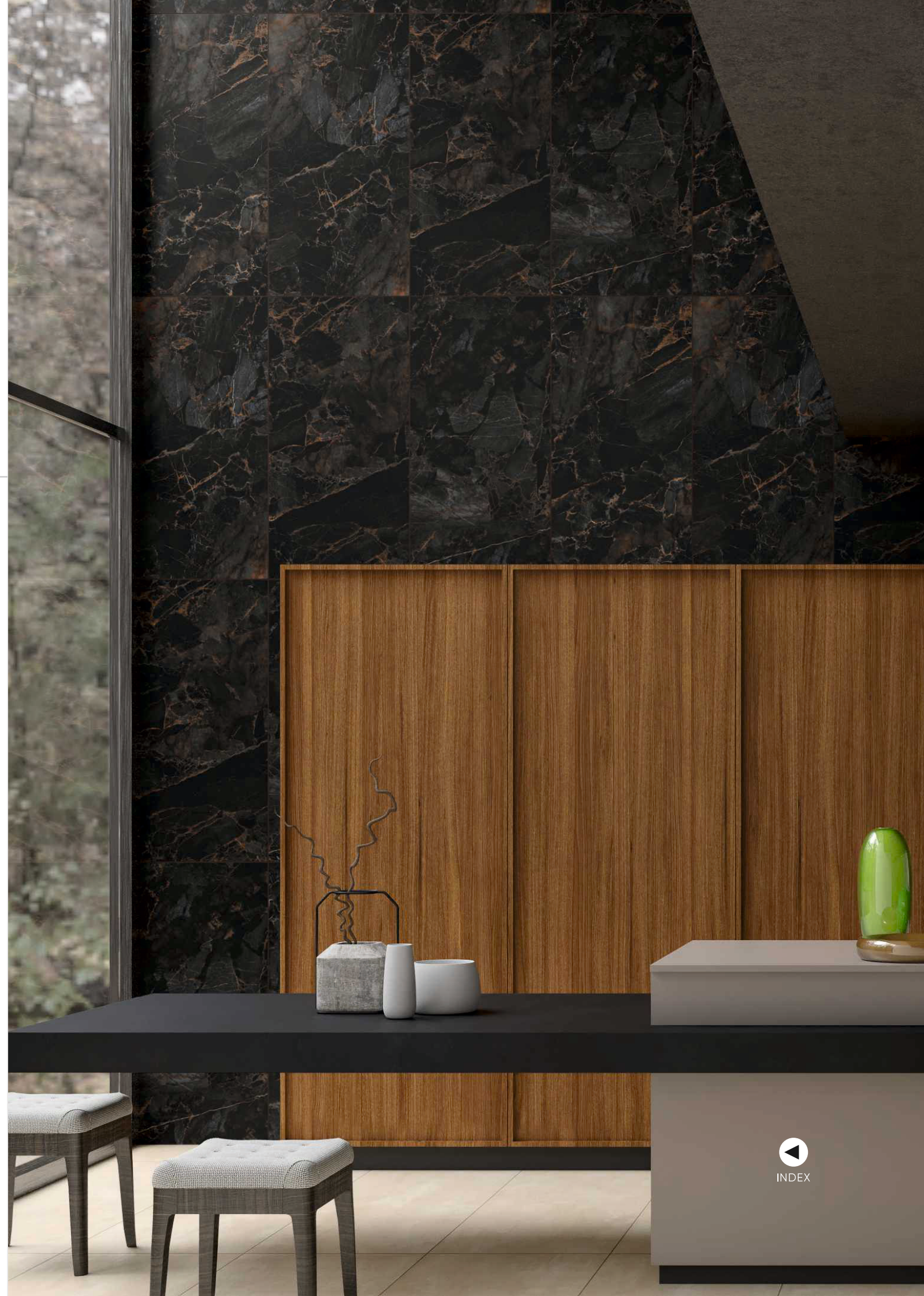
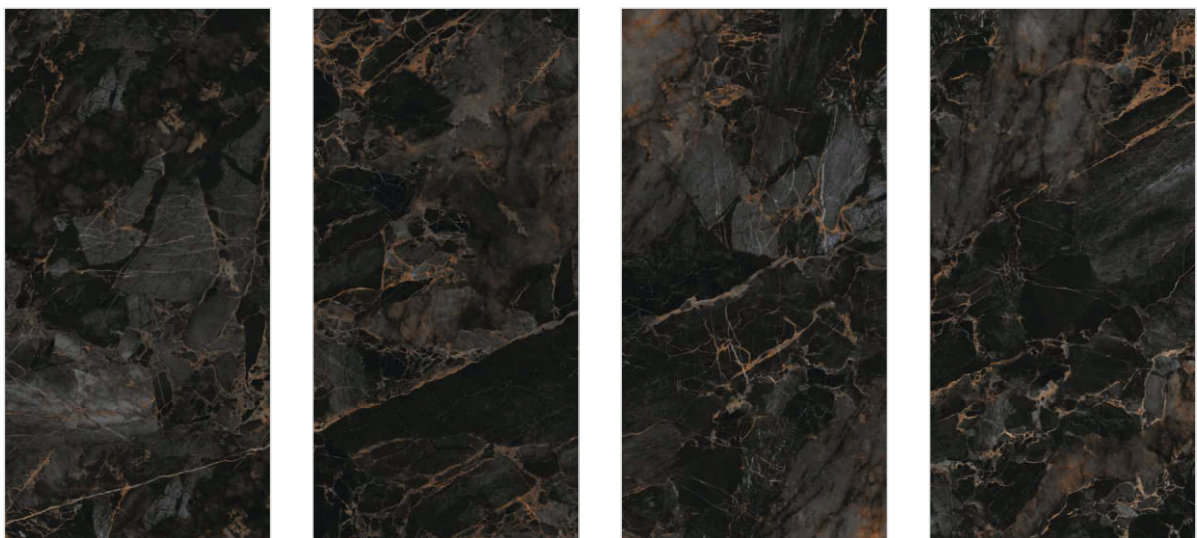
VNT-12 MIX

600X1200mm  
**VNT-13 BLACK**



**9MM**  
Thickness

Random **04**





VNT-13 BLACK

600X1200mm

**VNT-14 BROWN  
CARVING**



**9MM**  
Thickness

Random **04**





VNT-14 BROWN

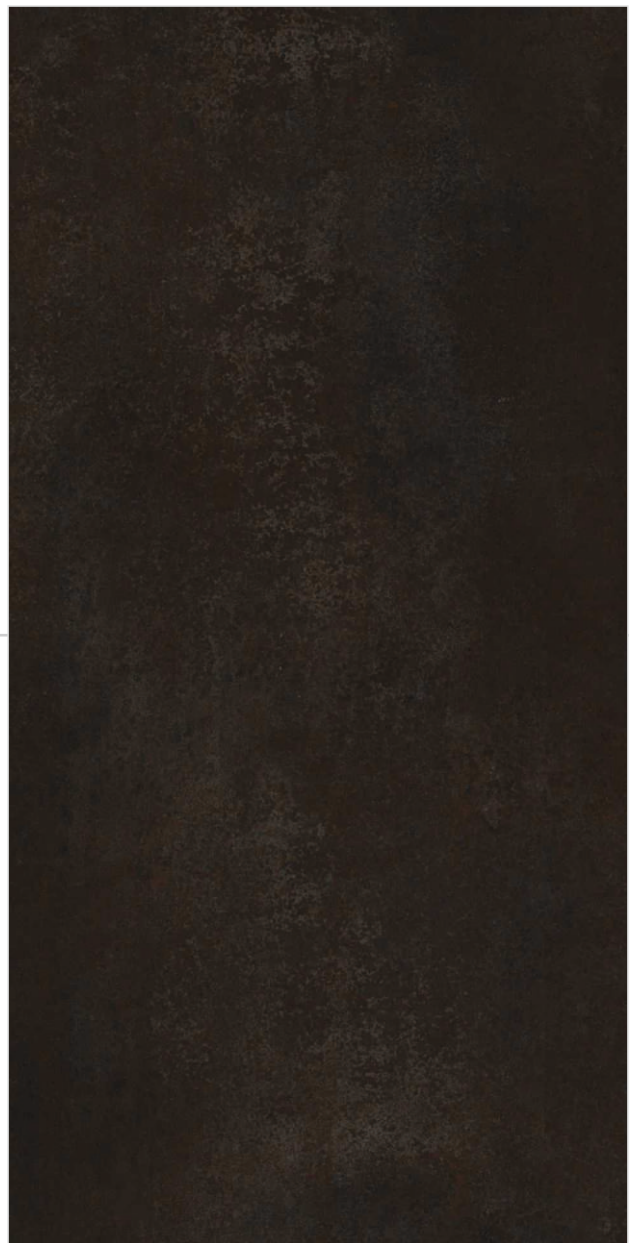
600X1200mm

**VNT-14 GRIGIO  
CARVING**



**9MM**  
Thickness

Random **04**





VNT-14 GRIGIO

600X1200mm

**VNT-14 NERO  
CARVING**



**9MM**  
Thickness

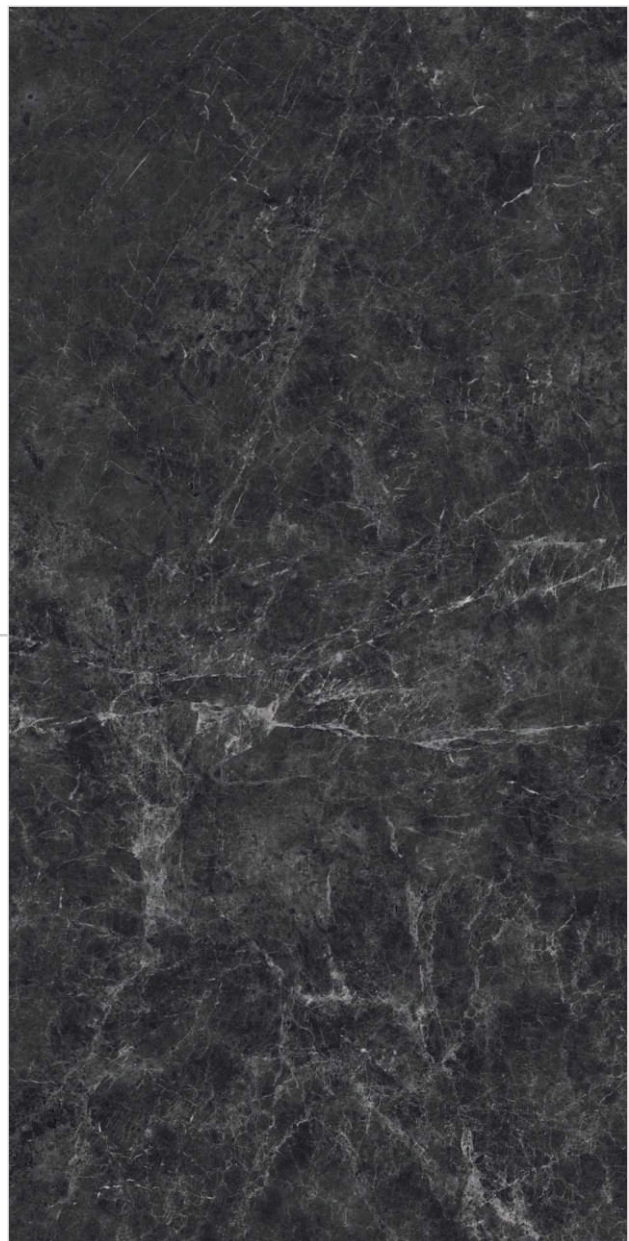
Random **04**





VNT-14 NERO

600X1200mm  
**VNT-15 BLACK**



 **9MM**  
Thickness

Random **04**





VNT 15 BLACK

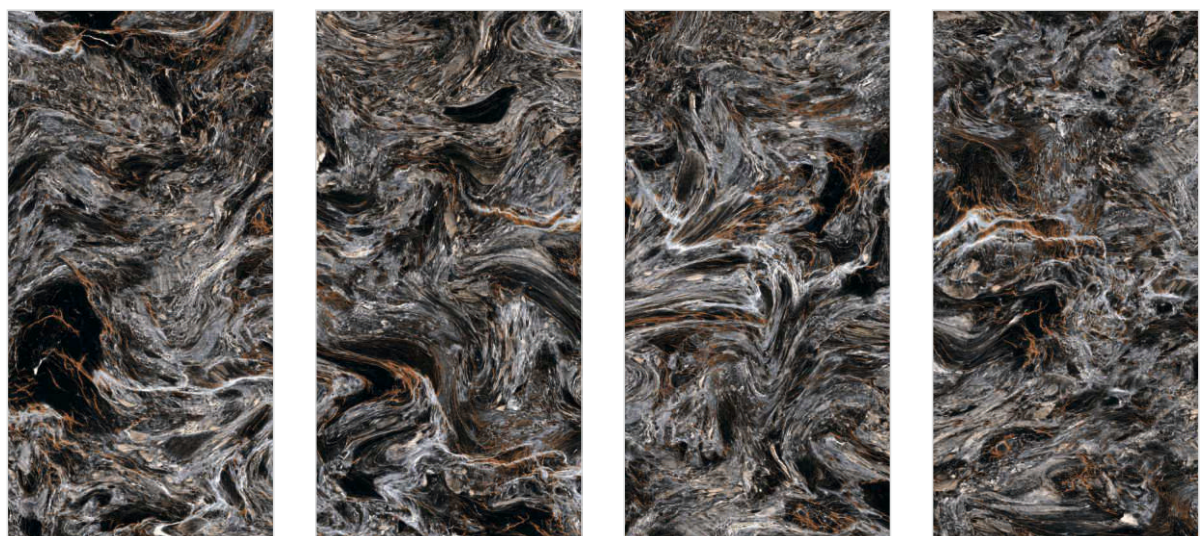
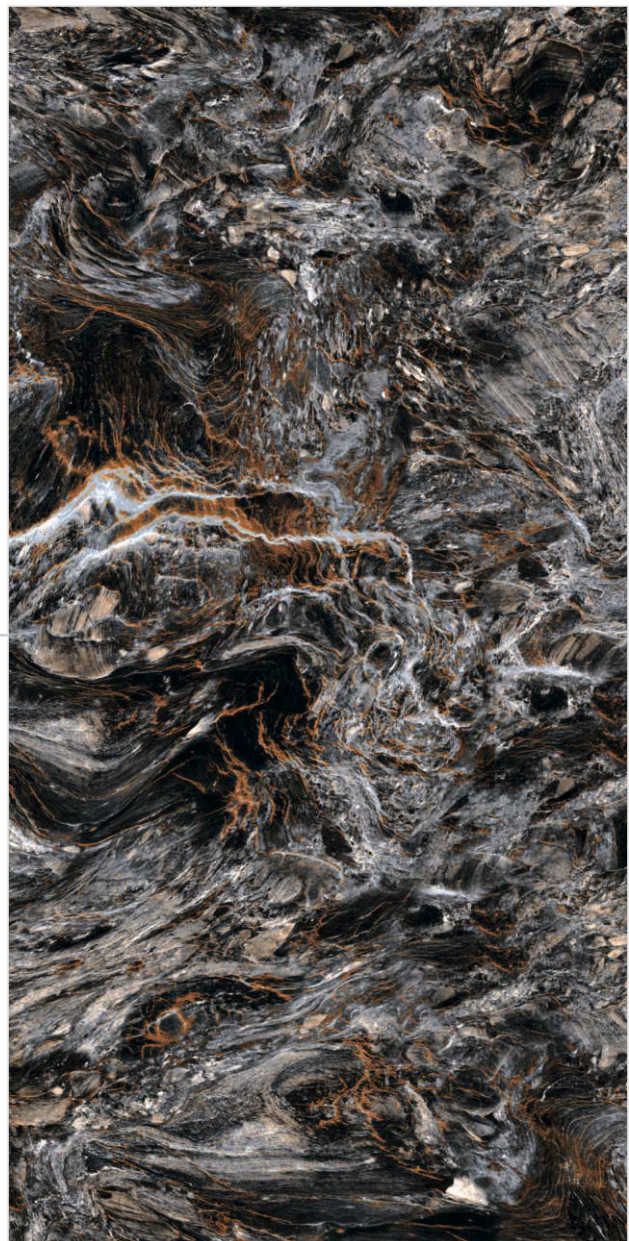
600X1200mm

## VNT-16 BLACK



**9MM**  
Thickness

Random **04**



INDEX



VNT-16 BLACK

**Acasta**  
C e r a m i c s